

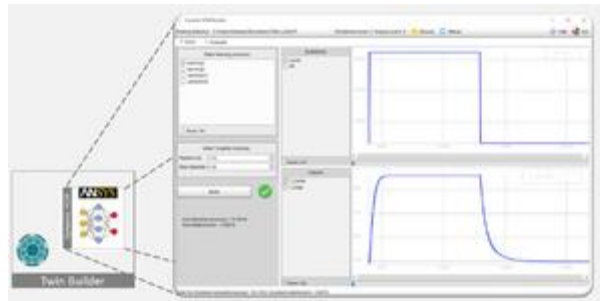
ANSYS Systems Update 2019 R1

ANSYS TwinBuilder

- New TwinBuilder product family
 - "Twin Builder Pro" for general system simulation
 - "Twin Builder Premium" with an expanded focus on the image of reduced models
 - "Twin Builder Enterprise" for creating digital twins and their use in IIoT platforms and edge devices (including the associated runtime SDK for the TwinBuilder implementation)
- Dynamic ROM Builder for creating reduced models for nonlinear dynamically responsive structures
- Export of independently executable TwinBuilder models for implementation in IIoT platforms and edge devices
- IEEE VHDL-2008 Encryption of TwinBuilder models for IP protected model exchange
- New Modelica libraries for hydraulic and pneumatic systems



Integration of digital twins in IIoT platforms using the TwinBuilder Runtime SDK



Dynamic ROM Builder for model reduction of nonlinear dynamic model behavior