

ANSYS 3D Design Update in 2019 R3

ANSYS Discovery Live:

Easy evaluation of product behaviors under a broad spectrum for optimal product design in record time using-

1. The all-new interactive topology optimization tool for generative design
2. New simulation functionality, including mass flow outlets and time varying inputs for transient studies.

ANSYS Discovery SpaceClaim:

1. Automatic surface reconstruction from faceted geometry, such as STL.
2. Visualization improvements on higher-quality renderings for better user experience.

ANSYS Discovery AIM:

The release offers more proven, easy-to-use functionality- from mesh failure visualization to structural stability evaluation- than ever before, using-

1. Support for structural beams,
2. Physics-aware meshing enhancements
3. Linear buckling capabilities.

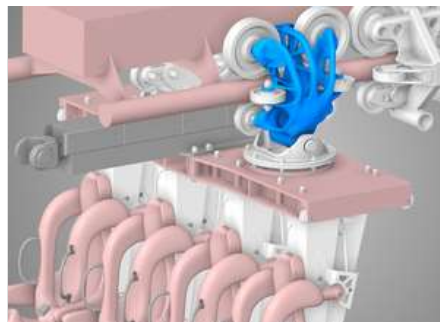


Fig 1: Enhanced Dynamic Shadow Rendering in Discovery Live 2019R3

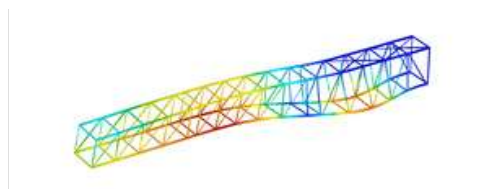


Fig 2: Butt analysis with bars in ANSYS AIM